



MAYO CLINIC



Burnout → Esprit de Corps

(caring for each other for our patients)

Stephen Swensen, MD, MMM, FACR
Senior Fellow, Institute for Healthcare Improvement
Professor Emeritus, Mayo Clinic College of Medicine

QUALITY
NOTHING IS MORE IMPORTANT

Nothing to disclose.

Agency

**Co-Creation
Ideal Work**

Coherence

Camaraderie

ASK-LISTEN-EMPOWER

5 Behaviors

Pronoun Test

**Co-Creation
Ideal Work**

Commensality

Job-Crafting

ASK-LISTEN-EMPOWER

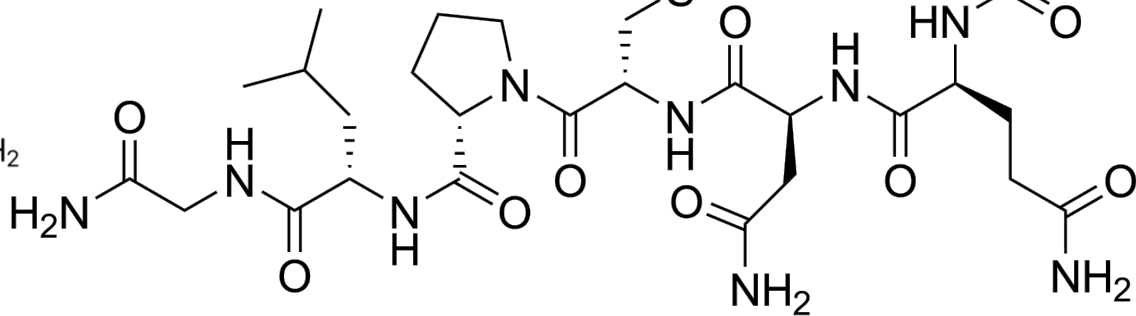
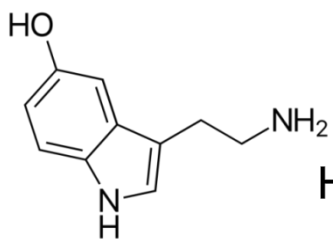
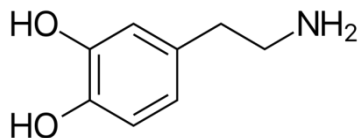
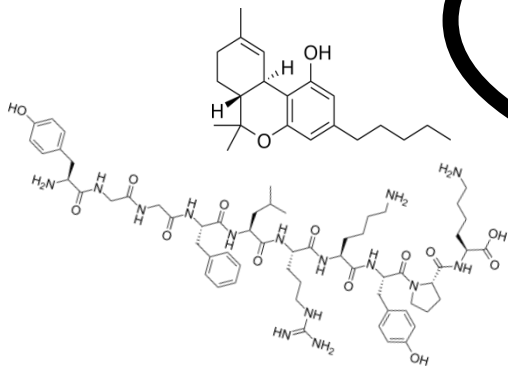
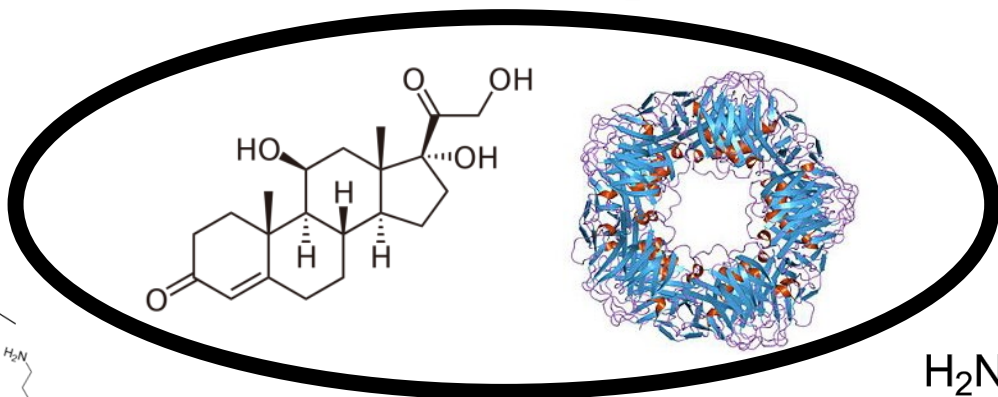
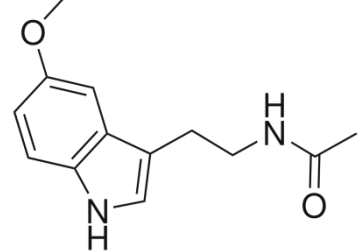
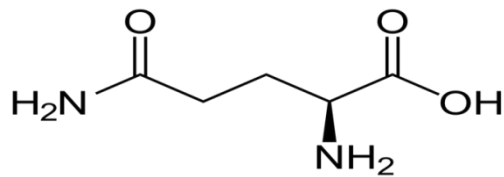
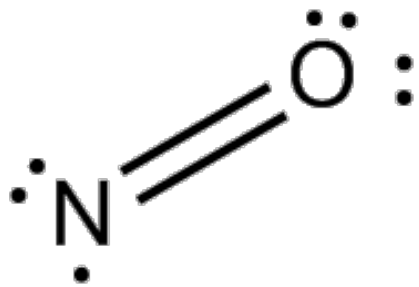
5 Behaviors

Pronoun Test

**Co-Creation
Ideal Work**

Commensality

Job-Crafting





I am pleased to share any of the article pdf's that I authored. Please let me know if you are interested and I will email them to you. (swensen.stephen@mayo.edu) Steve Swensen

Swensen. Esprit de Corps & Quality ...the Case for Eradicating Burnout. J Healthcare Management. 63(1), 2018

Swensen, Shanafelt. Organizational Framework to Bring Back Joy in Practice. The Joint Commission Journal on Quality and Patient Safety 2017

Swensen, Kabcenell, Shanafelt, Physician-Organization Collaboration Reduces Physician Burnout and Promotes Engagement: The Mayo Clinic Experience. Journal of Healthcare Management, 2016. 61(2): p. 105-127.

Swensen, S., et al., Leadership by Design: Intentional Organization Development of Physician Leaders. Journal of Management Development, 2016. 35(4): p. 549-570.

Swensen, S.J., et al., The Mayo Clinic Value Creation System. Am J Med Qual, 2012. 27(1): p. 58-65.

Swensen, S.J., et al., The Business Case for Healthcare Quality Improvement. J Patient Saf, 2013. 9(1): p. 44-52.

Swensen, Pugh, McMullan, Kabcenell. High-Impact Leadership: Improve Care, Improve the Health of Populations & Reduce Costs. Institute for Healthcare Improvement; 2013. Available: www.ihl.org.

Dilling, Swensen... Mayo Clinic Model of Diffusion. Jt Comm J Qual Patient Saf. 2013;39:167.

Swensen, et al. Cottage Industry to Postindustrial Care. New England Journal Medicine 2010; 362

References

Swensen, Shanafelt. Organizational Framework to Bring Back Joy in Practice. The Joint Commission Journal on Quality and Patient Safety 2017

Sinsky, C.A., et al., *In Search of Joy in Practice: A Report of 23 High-Functioning Primary Care Practices*. The Annals of Family Medicine, 2013. **11**(3): p. 272-278.

Swensen, S., A. Kabacene, and T. Shanafelt, *Physician-Organization Collaboration Reduces Physician Burnout and Promotes Engagement: The Mayo Clinic Experience*. Journal of healthcare management / American College of Healthcare Executives, 2016. **61**(2): p. 105-127.

Johnson, J.V., et al., *Long-term psychosocial work environment and cardiovascular mortality among Swedish men*. American Journal of Public Health, 1996. **86**(3): p. 324-331.

Baard, P.P., E.L. Deci, and R.M. Ryan, *Intrinsic Need Satisfaction: A Motivational Basis of Performance and Well-Being in Two Work Settings*. Journal of applied social psychology, 2004. **34**(10): p. 2045-2068.

Swensen, S., et al., *Leadership by design: intentional organization development of physician leaders*. Journal of Management Development, 2016. **35**(4): p. 549-570.

Thirioux, B., F. Birault, and N. Jaafari, *Empathy Is a Protective Factor of Burnout in Physicians: New Neuro-Phenomenological Hypotheses Regarding Empathy and Sympathy in Care Relationship*. Front Psychol. 2016;7:763. doi:10.3389/fpsyg.2016.00763.

Swensen, Stephen & Meyer, Gregg & Nelson, Eugene & C Hunt, Gordon & B Pryor, David & Weissberg, Jed & Kaplan, Gary & Daley, Jennifer & R Yates, Gary & R Chassin, Mark & James, Brent & Berwick, Donald. (2010). Cottage Industry to Postindustrial Care - The Revolution in Health Care Delivery. The New England journal of medicine. 362. e12. 10.1056/NEJMp0911199.

Krasner, M.S., et al., *Association of an educational program in mindful communication with burnout, empathy, and attitudes among primary care physicians*. Jama, 2009. **302**(12): p. 1284-1293.

References

- Taris, *Rrelationship between burnout and performance? A critical review of 16 studies*. Work & Stress, 2006. **20**(4): p. 316-334.
- Swensen, S.J., et al., *The Mayo Clinic Value Creation System*. Am J Med Qual, 2012. **27**(1): p. 58-65.
- Beckman, H.B., et al., *The impact of a program in mindful communication on primary care physicians*. Academic medicine : journal of the Association of American Medical Colleges, 2012. **87**(6): p. 815-9.
- Kniffin, K.M., et al., *Eating Together at the Firehouse: How Workplace Commensality Relates to the Performance of Firefighters*. Human Performance, 2015. **28**(4): p. 281-306.
- West, C.P., et al., *Intervention to promote physician well-being, job satisfaction, and professionalism: a randomized clinical trial*. JAMA Intern Med, 2014. **174**(4): p. 527-33.
- Linzer, M., et al., *A cluster randomized trial of interventions to improve work conditions and clinician burnout in primary care: results from the Healthy Work Place (HWP) study*. Journal of general internal medicine, 2015. **30**(8): p. 1105-1111.
- Sinsky, C., et al., *Allocation of physician time in ambulatory practice: A time and motion study in 4 specialties*. Annals of Internal Medicine, 2016. **165**(11): p. 753-760.
- Shultz, C.G. and H.L. Holmstrom, *The use of medical scribes in health care settings: a systematic review and future directions*. J Am Board Fam Med, 2015. **28**(3): p. 371-81.
- Wu, A.W., *Medical error: the second victim. The doctor who makes the mistake needs help too*. BMJ. 2000 Mar 18;320(7237):726-7.
- Scott, *Deploying a system wide second victim rapid response team*. Communication of Critical Test Results, 2010.
- Swensen. *Esprit de Corps & Quality ...the case for eradicating burnout*. J Healthcare Management. 63(1), 2018

References

- West, C.P., et al., *Association of resident fatigue and distress with perceived medical errors*. *Jama*, 2009. 302(12): p. 1294-1300. 17 | Page
- Williams, E.S., et al., *The relationship of organizational culture, stress, satisfaction, and burnout with physician-reported error and suboptimal patient care: results from the MEMO study*. *Health care management review*, 2007. 32(3): p. 203-212.
- Swensen, S.J., et al., *The business case for health-care quality improvement*. *J Patient Saf*, 2013. 9(1): p. 44-52.
- Ruotsalainen, J.H., et al., *Preventing occupational stress in healthcare workers*. The Cochrane Library, 2015.
- Laskowski, E.R. *Walking Throughout Your Day Keeps Depression (and a Host of Other Health Problems) Away*. in *Mayo Clinic Proceedings*. 2016. Elsevier.
- Epstein, R.M. and M.S. Krasner, *Physician resilience: what it means, why it matters, and how to promote it*. *Acad Med*, 2013. 88(3): p. 301-3.
- Sood, A., et al., *Stress Management and Resiliency Training (SMART) Program among Department of Radiology Faculty: a pilot randomized clinical trial*. *EXPLORE: The Journal of Science and Healing*, 2014. 10(6): p. 358-363.
- Panagioti, M., et al., *Controlled interventions to reduce burnout in physicians: A systematic review and meta-analysis*. *JAMA Internal Medicine*, 2016.
- West, C.P., et al., *Interventions to prevent and reduce physician burnout: a systematic review and meta-analysis*. *The Lancet*. 388(10057): p. 2272-2281.
- Shanafelt, T.D., et al., *Longitudinal Study Evaluating the Association Between Physician Burnout and Changes in Professional Work Effort*. *Mayo Clinic Proceedings*. 91(4): p. 422-431.