



# **Empowering Families through a Hands & Voices Guide By Your Side and EHDI Collaboration**

**Gayla Hutsell Guignard, Indiana EHDI Program Director**  
**Lisa Kovacs, Indiana GBYS Parent Program Coordinator**

# Presentation Overview





# Empowerment

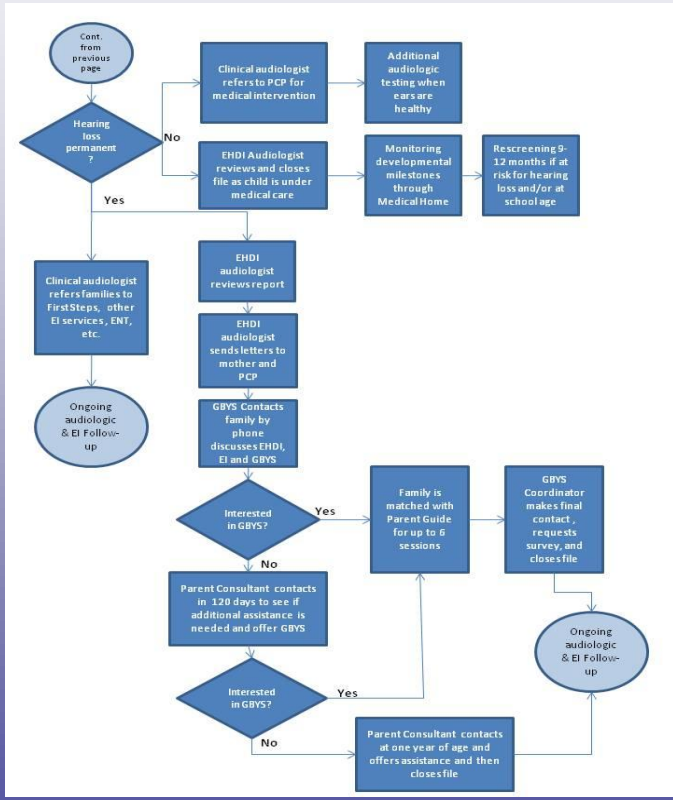
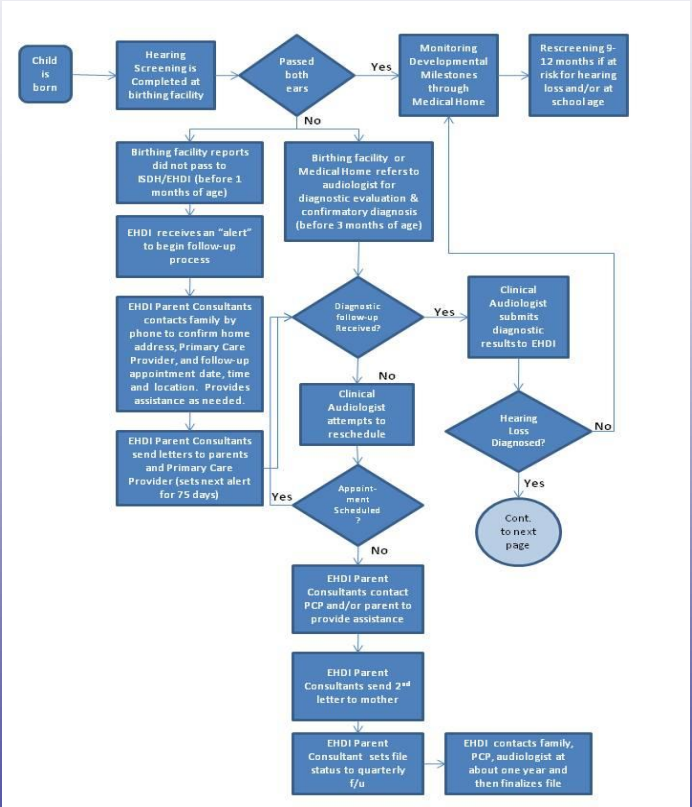
- **To enable; to grant power**
  - **A parent's journey towards becoming empowered**
- **Can empowerment be expedited?**
  - **Telling, inviting, including, encouraging, allowing, bringing in, supporting**



# The Opposite of Empowerment

- **Can empowerment be thwarted?**
  - **Constraining, discouraging, prohibiting, forbidding, holding back, excluding, obstructing, disabling, doing for someone what they can do for themselves**

# EHDI Workflow



# Barriers to the GBYS and EHDI Collaboration

- **Sharing of child-centric information from EHDI to GBYS and solutions**
- **Reporting of data from GBYS to EHDI and solutions**

# Parent-to-Parent Support in EHDI

- **EHDI Parent Consultants**
  - Make approximately 600 contacts per month through phone calls and letters to families, physicians, audiologists, hospitals, early intervention



# Parent-to-Parent Support in EHDI

- **EHDI Parent Consultant**
  - Daily work
  - Other contributions
  - Impact



# **Guide By Your Side Data**

## **Sept 09-Dec 10**

- **151 diagnosed families contacted by GBYS Coordinator**
- **104 families enrolled in GBYS**
- **675 total contacts with the Program Coordinator and Parent Guides**

# Parent-to-Parent Support in EHDI

- **GBYS Program Coordinator**
  - Daily work
  - Other Contributions
  - Impact
- **GBYS Parent Guides**
  - Guide activities
  - Impact



# **Impact of Hands & Voices' GBYS on the EHDI Process**

- **GBYS impacts EHDI follow-up by**
  - **Encouraging earlier audiology follow-up**
  - **Supporting families through the diagnostic process and enrollment in intervention**
  - **Allowing families to tell and have their own story**



# **Impact of Hands & Voices GBYS on the EHDI Process**

- **Providing data related to long-term follow-up on diagnosed families**
- **Participating and providing a parent perspective in EHDI Program development of protocols, initiatives, materials**
- **Planning, administering, and evaluating the annual EHDI Family Conference**

# Contact Us

**Gayla Hutsell Guignard**  
[ghutsell@isdh.IN.gov](mailto:ghutsell@isdh.IN.gov)

**Lisa Kovacs**  
[lkovacs@isdh.IN.gov](mailto:lkovacs@isdh.IN.gov)

**Website**

[www.hearing.IN.gov](http://www.hearing.IN.gov)

**Toll Free**

**888-815-0006**



***Early Hearing Detection & Intervention Program***